



### General Product Description

Protecta® FR Graphite Plate is a preformed self-adhesive intumescent plate, used to reinstate the fire resistance performance of flexible wall constructions when punctured with plastic wall boxes. It is used where the walls have been provided with apertures for the penetration of conduits and cables into socket boxes, on one or both sides of the wall.

The graphite plate immediately reacts to fire through the heat and automatically expands and fills up the box, preventing fire and smoke from passing through. Fitting Protecta® FR Graphite Plate will reinstate the fire resistance performance of flexible wall constructions for at least 60 minutes. It also prevents the passage of smoke and fire through the electrical conduits between socket boxes.

### Features

Protecta® FR Graphite Plate is available in both circular and square plates for the following wall boxes:

#### Square plates for wall boxes:

- ELKO 3012 S57/100
- ELKO 4202
- ELKO 4040 S57/100
- ELKO 4206
- SCHNEIDER IMT36016 BR6ST
- SCHNEIDER IMT36006 BR6ST

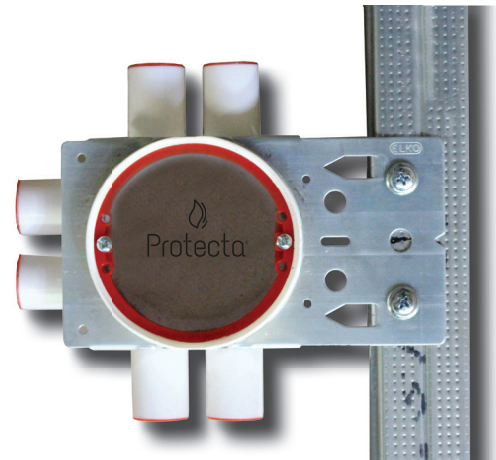
Pad fits in the square recess in the base of the box and is 45mm x 45mm.

#### Circle plates for wall box:

- ELKO 45/6
- ELKO 5228

Pad fits in the round recess in the base of the box and is Ø59mm in diameter.

**Note:** The pad must not obstruct cable entry.



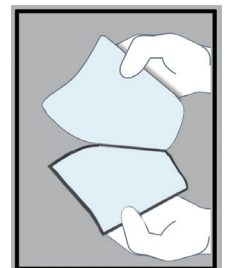
### Benefits

- Wall boxes can be fitted back to back.
- 60 minutes of both integrity and insulation resistance.
- Quick and easy to install.
- For flexible walls with a minimum thickness of 100mm.
- Can be used on insulated and uninsulated walls.
- Tested with a wide range of cables and conduits interconnected between boxes.
- Tested with empty conduits between boxes for future cable transits.

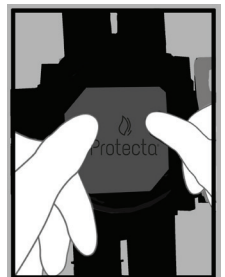
### Application Instructions

All surfaces must be clean and sound, free from dirt, grease and other contamination.

1. Remove the backing paper from the back of the pad.



2. Fit into place inside at the base of the socket box.



**Note:** The aperture around the socket box should be as tightly fitting as possible and any gaps filled with plaster filler.



### Fire Classification

Protecta® FR Graphite Plate has been tested in accordance with EN1366-3 to **EI 60**.

Flexible walls must have a minimum thickness of 100mm and comprise of steel studs or timber studs lined on both faces, with a minimum of 2 layers of 12.5mm thick boards.

When using timber studs; no part of the penetration seal may be closer than 100mm to a stud and minimum 100mm of insulation of class A1 or A2 according to EN 13501-1 must be provided within the cavity between the penetration seal and the stud.

### Usage

Protecta® FR Graphite Plate is supplied ready to fit, one plate required per electrical socket box.

### Packaging

Protecta® FR Graphite Plate is supplied packed in boxes, 10 plates per box.



### Limitations

Protecta® FR Graphite Plate is not recommended for application on substrates that can exude oils, plasticizers or solvents.

Protecta® FR Graphite Plate is not recommended for underwater applications.

### Technical Data

Technical Approval	ETAG 026-2
Fire Test - EN13501-2	EI 60
Durability - ETAG 026-2	Z <sub>2</sub> intended for use in internal conditions with humidity classes other than Z <sub>1</sub> , excluding temperatures below 0°C.
Conditioning procedure	EN 13238:2010
Expansion ratio	17:1
Expansion pressure	65.4 N
Colour	Light Grey with silver flecks
Texture	Textured surface
Finish	Matt finish on one side, other side satin finish
Thickness	approximately 3.8mm
Weight per unit area/length	5.1 Kg <sup>m</sup> - <sup>2</sup>
Density	1409 Kg <sup>m</sup> - <sup>3</sup>
Optimum expansion time	5 minutes
Optimum expansion temperature	550° C
Storage	Store in temperatures between 5° C and 30° C
Life	Under normal conditions; 50 years +

Protecta® FR Graphite Plate, was tested to the principles of ETAG 026 'Fire Stopping and Fire Sealing Products - Part 2 Penetration Seals' by Exova Warringtonfire.

### Health and Safety

Material in contact with eyes should be washed out immediately with water. Seek medical advice if discomfort persists. More detailed information can be found in the relevant Protecta® FR Graphite Plate Safety Data Sheet.